



FUTURE DURSLEY

Our Neighbourhood Plan

Dursley Neighbourhood Development Plan

Local Green Space Designation Evidence Report – May 2018



Contents

1. Introduction	Page 2
2. Process	Page 3
3. Assessment & Summary of Evidence	Page 6
4. Appendices	Page 32

1. Introduction

The Local Green Space (LGS) designation was introduced in national planning policy, as part of the Government's commitment to promoting healthy communities (NPPF, 2012, Section 8, para. 76-78). Through Local and Neighbourhood Development Plans, local communities can identify and protect green areas of particular importance to them. Once a site is designated as a Local Green Space, it is protected against new development except in 'very special circumstances'.

The designation of Local Green Space must be complementary to the objectives of sustainable development, and to sufficient investment in homes, jobs and other essential services. It must also be consistent with national and local Green Belt policy.

National policy states that blanket designation of all green space is not appropriate. For a Local Green Space to be eligible for designation, it must be:

- In reasonable proximity to the community which it serves;
- Demonstrably special to a local community and hold a particular local significance, for example because of its beauty, historic significance, recreational value (including as a playing field), tranquility or richness of its wildlife, and
- Local in character and not an extensive tract of land.

Proposed designations must be supported by evidence that the green area is special to the community.

National Planning policy and guidance (Section 8 of the NPPF, and paragraphs 005-022 of National Planning Practice Guidance) identifies a number of specific exceptions where designating Local Green Space is not appropriate:

- Education sites:** The NPPF (para. 72) places great weight on the importance of ensuring a sufficient number of school places is available to meet the needs of existing and new communities, and therefore on the need to create, alter or expand schools. Because of this, it is very unlikely that green spaces within school grounds, including playing fields, are suitable for Local Green Space designation.
- Highway land/verges:** Land adjoining highways may need to be utilised or reconfigured for highway works, and is subject to permitted development rights for this, making it unsuitable for designation,

- **Sites with planning permission:** A green space within a site with extant planning permission cannot be designated until the development is complete.

In other cases Local Green Space designation may be at odds with development aspirations for a site, for example the improvement or rebuilding of sports facilities or changing rooms etc.

Some open spaces are already protected by other designations such as Site of Special Scientific Interest (SSSI), or Area of Outstanding Natural Beauty (AONB) etc. If this is the case, consideration should be given to whether any additional local benefit would be gained by designation as a Local Green Space. For sites such as this, the added value of Local Green Space designation needs to be demonstrated over and above the existing designation.

2. Process

The process undertaken to date, to identify Local Green Spaces for inclusion in the Dursley Neighbourhood Development Plan, is outlined below:

Stage	Explanation	Notes
Initial List [Oct 2016]	NDP steering group put together a long list of all potential LGS within Dursley, these were mapped and an initial sifting exercise against the NPPF criteria was undertaken.	The long list of potential LGSs is included as Appendix 1 to this report. Site Visits to Land off Hardings Drive & Acacia Drive carried out by SG representatives on 10/10/2016. SG Minutes for 12/10/2016 record the decisions.
Long List reviewed following advice from SDC NP Officer [November /December 2016]	Shortlist of potential LGS agreed by members of the NDP Steering Group.	SG Minutes for 9/11/2016 & 14/12/2016 record these decisions.
Landowners notified	Landowners of the 9 shortlisted LGS were formally notified in writing, and asked to comment. Letters sent to Mr Clutterbuck and Ms Munyard on 30/1/2017. No responses received.	A copy of the template letter sent to landowners is included as Appendix 2 to this report. Full copies of these original letters are available from Dursley Town Council. Appendix 4 contains

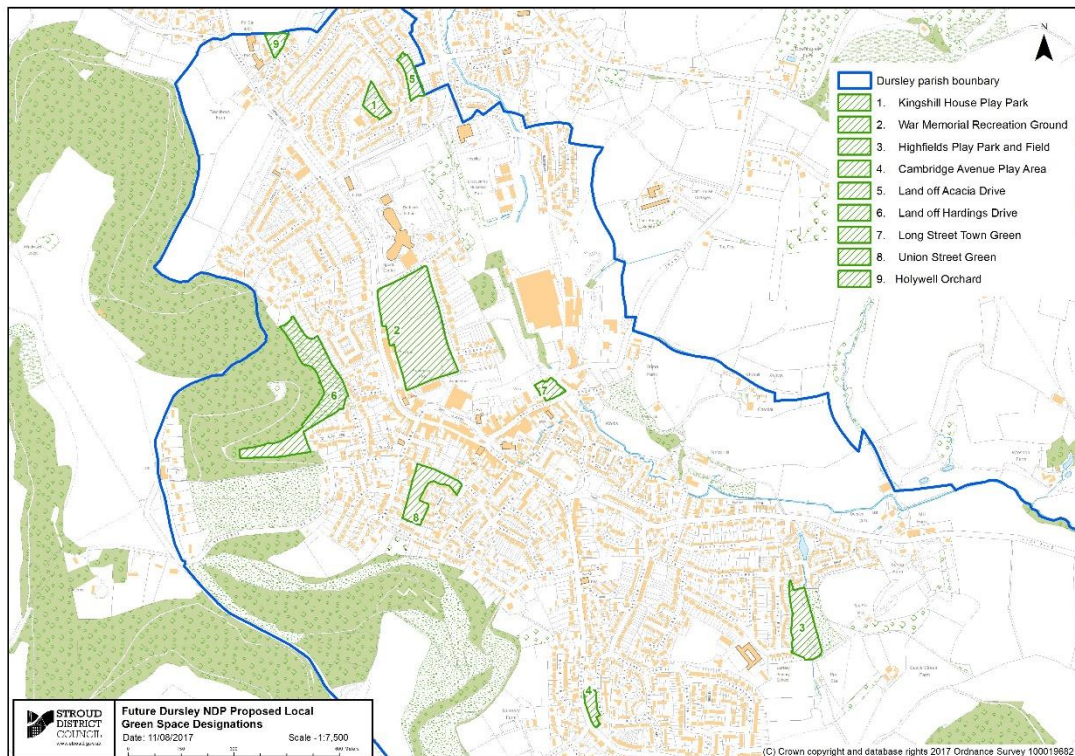
	<p>Letters sent to Carlos Novoth, Public Spaces Manager & Nick Stewart Principal Estates Surveyor at SDC on 7/2/2017 regarding: Highfields Play Park & Field, Cambridge Avenue Play Area, Long Street Town Green, Union Street Green & Holywell Orchard. Response received March 2018. SDC object to Highfields Park and Land off Acacia Drive as LGSD and agree to Long Street Town Green, Cambridge Avenue Play Area, Union Street Green & Holywell Orchard if these are formally transferred to DTC. See individual LGSD templates for decisions. See PDF File on TCs NDP webpages for correspondence between SG and SDC.</p> <p>Letter sent to John Kay, Clerk at Dursley Town Council on 9/2, regarding Kingshill House Play Park & War Memorial Recreation Ground. Response received 17/3, positive response for Kingshill House Play Park, not for WMRG as TC do not want to restrict the potential for development improvements to this space at this time.</p>	<p>copies of the landowner responses</p>
--	--	--

<p>Local community consultation and evidence collection [April – July 2017]</p>	<p>Letters sent to those living in the vicinity of potential LGS, together with a map and a form to fill in to ask for comments and statements of support or otherwise.</p> <p>The list of potential LGS proposed to be allocated were included within an informal consultation on the NDP including a leaflet drop to households in the Dursley parish. In addition display information on the proposed LGS was exhibited at Annual Town Meeting on 23rd May 2017 and Carnival Dursley on Saturday July 15th 2017.</p>	<p>Appendix 3 contains:</p> <ul style="list-style-type: none"> (i) template letter sent to those living in the vicinity of the LGS (ii) Copy of the consultation questionnaire delivered to households across Dursley. (iii) Photo of Display Boards relating to Local Green Space (iv)
<p>Assessment of responses [June – July 2017]</p>	<p>All responses were analysed, and recommendations were then made as to which nominations were demonstrably special and why.</p>	<p>This report was collated based on the responses from landowners, the survey responses and the responses from residents in the vicinity of the LGS.</p> <p>Appendix 5 contains a copy of the letters of community support and summary of feedback received at Carnival Dursley in July 2017.</p>
<p>Additional LGS nominations and evidence collection Land off Shakespeare Road</p>	<p>No additional LGS were identified by the community and considered for designation against the same criteria.</p>	<p>n/a</p>

What follows is a collation and summary of the evidence received for each proposed Local Green Spaces, together with an assessment of each against the criteria set out in paragraphs 76-78 of the NPPF.

3. Assessment & Summary of Evidence


Figure 1: Map of Proposed Local Green Space Designations



Site name	Kingshill House Play Park
Site number	1 on map
Photo	
Landowner	Dursley Town Council
Description of green space	<p>Kingshill House Play Park is a formal space with play equipment including a climbing wall, a slide, scramble net and a giant swing. There is also a large green open space for informal sports and games. The park is situated on a large piece of land behind Kingshill House. The land was gifted to the Town by R.A. Lister for the children of the town. In 2008, the Town Council invested £30,000 in play equipment for the space. There was a consultation undertaken by the Lower Kingshill Management Cooperative involving over 200 local residents to help chose play equipment for the park.</p> <p>This park has tall trees and good views towards Cam Peak and the Littlecombe housing estate. The play equipment and large grassed area are widely used by local children. This green space is away from busy roads, surrounded by housing and is a quiet and peaceful place. A great variety of birds have been spotted in the tress in Kingshill House Play Park.</p>
Relevant Planning constraints	This green space originally formed part of the garden for Kingshill House, a listed Georgian mansion, and now an entertainment and arts centre.
Map	See figure 1.
In reasonably close proximity to the community it serves	This green space is located within a residential area within the town.
Local in character and not an extensive tract of land	This is a large well contained green space, which is clearly surrounded with a historic boundary.


<p>Demonstrably special to the local community and holds a particular significance, for example because of its beauty, historic significance, tranquility, recreational value (including as a playing field), or richness of wildlife</p>	<p>Consultation events:</p> <p>Dursley Town Festival 25/6/2016 – 16 (combined and specific) comments from community in support of green spaces.</p> <p>Dursley Primary School 1/7/2016 (20 children 4-11 yrs) – some use this park.</p> <p>Transition C&D Flower Show 3/9/2016 -7 responses in support of this LGSD.</p> <p>Dursley Farmers Market 10/9/2016 – 2 comments in support of all LGSDs.</p> <p>Dursley Carnival 15/7/2017 - 27 responses in support of all LGSD plus 2 specifically for this site.</p> <p>NDP Leaflet: 10 in favour of all proposed LGS and 2 specifically for this site.</p> <p>Letter drop: 10 letters of support received from the community in favour of designating this as a Local Green Space</p> <p>Reg 14 responses: 4 responses in support of all LGSDs.</p> <p>This nomination is also supported by the NDP Steering Group all of who are familiar with this green space.</p> <p>Beauty and tranquility</p> <ul style="list-style-type: none"> <input type="checkbox"/> The Green Space has tall mature trees and views out towards Cam peak. It is an attractive and quiet space. <input type="checkbox"/> There are no roads of traffic running through the space, and it is calm and tranquil during the week, albeit busier when filled with children playing. <p>Historic Significance</p> <ul style="list-style-type: none"> <input type="checkbox"/> The Green Space was gifted to the children of the town by R.A. Lister, therefore it has a historic significance as a play space. On 12th December 1935 the Kingshill Playing Field (now known as the Kingshill House Play Park) was presented to the Council by R.A. Lister Co Ltd Engineers of the Town in memory of Sir Robert Aston, the founder of Listers. A display plaque still stands with this information in the park today. <input type="checkbox"/> The park backs onto Kingshill House, an elegant Georgian mansion that dates back to 1705 which is now an arts centre. The park contributes to the setting of this historic building.
--	---

	<p>Community and recreational value</p> <ul style="list-style-type: none"> <input type="checkbox"/> The Green Space is well used by the community, particularly children and families. New play equipment was installed by the Town Council in 2008. In 2013, a route across the park was created (Oak Drive to Kingsdown) and a commemorative plaque was put in place, the park won Gloucestershire Playing Field Association’s small playground of the year competition in the same year. <input type="checkbox"/> The play equipment and large grassed area are widely used by local children. <p>Richness of wildlife</p> <ul style="list-style-type: none"> <input type="checkbox"/> The space is ideal for bird watching and has bat activity.
Landowner consultation	Dursley Town Council (DTC) notified of potential of potential to designate as a Local Green Space by letter dated 9 th February 2017.
Landowner support / objection	Response from DTC dated 17 March 2017 supported designating Kingshill House Play Park as a local Green Space.
Recommendation	Designate Land off Kingshill House Play Park as a Local Green Space in the Dursley Neighbourhood Plan.

Site name	War Memorial Recreation Ground
Site number	2 on map
Photo	
Landowner	Dursley Town Council
Description of green space	A well-maintained, attractive green area in the centre of town surrounded by trees and offering amazing views of the wooded slopes, of the Cotswold Escarpment. There are also views towards Cam Peak, Cam Long Down, Downham Hill and Uley Bury. The recreation ground was given to the town to commemorate those who died in World War 11. A great space for sports used by lots of local football teams, fitness (excellent park facilities and fitness equipment), leisure used as a meeting space, people have picnics and children's play areas, tennis available for all. It is used by the community e.g. local scouts and cubs and for community events e.g. fireworks and annual carnival. The park provides an oasis in the middle of town.
Planning constraints	The Recreation Ground is designated as Protected Outdoor Play Space in the Stroud Local Plan.
Map	See figure 1.
In reasonably close proximity to the community it serves	This Recreation ground is close to a large number of residential properties, a short walk from the town centre. It is used by a wider catchment in the Dursley & Cam area.
Local in character and not an extensive tract of land	Clearly bounded site, not an extensive tract of land.


<p>Demonstrably special to the local community and holds a particular significance, for example because of its beauty, historic significance, tranquility, recreational value (including as a playing field), or richness of wildlife</p>	<p>Consultation events: Dursley Town Festival 25/6/2016 – 16 (combined and specific) comments from community in support of green spaces.</p> <p>Dursley Primary School 1/7/2016 (20 children 4-11 yrs) Many of the children regularly use this park.</p> <p>Transition C&D Flower Show 3/9/2016 – 9 responses in support of this LGSD.</p> <p>Dursley Farmers Market 10/9/2016 – 2 comments in support of all LGSDs.</p> <p>Dursley Carnival 15/7/2017 – 27 responses in support of all LGSD.</p> <p>NDP Leaflet Responses: 10 in favour of all LGS and 3 specifically for this site.</p> <p>Letter drop:14 responses received in support from the community for this local green space nomination. 18 responses from the community supported protecting all of the local green spaces proposed.</p> <p>Reg 14 responses: 4 responses in support of all LGSDs</p> <p>This value of the recreation ground is agreed by the NDP Steering Group, all of whom are familiar with the site. However, concern was raised about whether Local Green Space Designation would potentially make recreation amenity improvements to the space in future problematic - as these would be defined as development. On this basis the NDP Steering Group did not support the LGS designation.</p> <p>Beauty</p> <p><input type="checkbox"/> Visual amenity and open space in wider views is valued.</p> <p>History/Recreation</p> <p><input type="checkbox"/> The space was gifted to the community for recreation and sport in 1951. It commemorates WWII and was opened by Percy Lister. Funds to support the project were raised by a voluntary subscription basis so that the site could be a lasting memorial to those who lost their lives in the war.</p>
--	--

	<p><input type="checkbox"/> The rec is used regularly by a variety of sports groups (particularly for football), as well as for firework displays and funfair.</p>
Landowner consultation	Dursley Town Council (DTC) notified of potential to designate as a Local Green Space by letter dated 9 th February 2017
Landowner support / objection	Response from DTC dated 17 March 2017 did not support designation as this would limit improvements to the recreational and community facilities. NDP also recommended that the space is not designated although it will remain strongly protected.
Recommendation	Do not designate the War Memorial Recreation Ground as a Local Green Space, instead retain Stroud Protected Outdoor Play Space Designation to allow some small scale development of sports and other facilities to be potentially undertaken in future (subject to planning approval).

Site name	Highfields Play Park and Field
Site number	3 on map
Photo	
Landowner	Stroud District Council (Leased to DTC)
Description of green space	A well-used recreational space by children and families. The site contains a refurbished BMX track, play equipment, football goal posts and a youth shelter. It is a tranquil space with stunning views of the Cotswold escarpment. Wildlife seen in the field include foxes, owls, hedgehogs and a large variety of birds.
Planning constraints	Designated as a protected outdoor play space in the Stroud Local Plan. It lies outside the settlement boundary.
Map	See figure 1.
In reasonably close proximity to the community it serves	Site is close to residential development and Dursley CofE Primary School.
Local in character and not an extensive tract of land	The site is well defined and the same boundary as the protected local outdoor play space designation is proposed for consistency

<p>Demonstrably special to the local community and holds a particular significance, for example because of its beauty, historic significance, tranquility, recreational value (including as a playing field), or richness of wildlife</p>	<p>Consultation events:</p> <p>Dursley Town Festival 25/6/2016- 16 (combined and specific) comments from community in support of green spaces</p> <p>Dursley Primary School 1/7/2016 (20 children 4-11 yrs) Many of the children use this park.</p> <p>Transition C&D Flower Show 3/0/2016 – 9 responses in support of this LGSD.</p> <p>Dursley Farmers Market 10/9/2016 – 2 comments in support of all LGSDs and 1 specific comment for this site.</p> <p>Dursley Carnival 15/7/2017 – 27 responses in support of all LGSD.</p> <p>NDP Leaflet responses: 10 in favour of all LGS and 3 specifically for this site.</p> <p>Letter drop: 2 responses received in support from the community for this local green space nomination.</p> <p>Reg 14 responses: 4 responses in support of all LGSDs 1 specifically for this site.</p> <p>This nomination is also supported by the NDP Steering Group.</p> <p>Recreational</p> <ul style="list-style-type: none"> <input type="checkbox"/> Popular with dog walkers; <input type="checkbox"/> Children play here, provides a valuable safe play space away from traffic. <input type="checkbox"/> Used for informal football and picnics <input type="checkbox"/> The refurbished BMX track is well used by young people. <p>Richness of wildlife</p> <ul style="list-style-type: none"> <input type="checkbox"/> Variety of wildlife can be found on the site including birds, badgers and foxes. <p>Some under-use of the space at present.</p>
<p>Landowner consultation</p>	<p>SDC notified by letter of intention to designate as a Local Green Space on 7 Feb 2017.</p>
<p>Landowner support / objection</p>	<p>Response received March 2018. LGSD not supported. SG voted to retain LGSD for this space. SDC notified of this in April 2018. DTC have agreed this as part of their</p>

	agreement to the Submission version of the draft plan in May 2018.
Recommendation	<p>The area being designated as a protected outdoor play space, in recognition of its recreational value.</p> <p>It is proposed that the Highfields Play Park and Field is designated as a Local Green Space in the Dursley Neighbourhood Plan.</p>

Site name	Cambridge Avenue Green Space & Play Area
Site number	4 on map
Photo	
Landowner	Stroud District Council
Description of green space	This is an attractive tree lined space in a residential area. The land originally formed part of a historic house. Children play here and it is also used by dog walkers. Foxes and deer have been seen in this location.
Relevant Planning constraints	The enclosed play area is the only part of this space which is formally recognised as a protected outdoor space in the Stroud Local Plan.
Map	See figure 1.
In reasonably close proximity to the community it serves	This green space and play area is near to a large number of residential properties, a short walk from the town centre.

<p>Local in character and not an extensive tract of land</p>	<p>The space is clearly defined and bounded by Cambridge Avenue and Woodmancote roads.</p>
<p>Demonstrably special to the local community and holds a particular significance, for example because of its beauty, tranquility, historic significance, recreational value (including as a playing field), or richness of wildlife</p>	<p>Consultation events</p> <p>Dursley Town Festival 25/6/2016 – 16 (Combined and specific) comments in support of green spaces.</p> <p>Dursley Primary School 1/7/2016 20 children (4-11 yrs) Some of the children use this park.</p> <p>Transition C&D Flower Show 3/9/2016 – 8 responses in support of this LGSD.</p> <p>Dursley Farmers Market 10/9/2016 –2 comments in support of all LGSDs.</p> <p>15/7/2017 – 27 responses in support of all LGSD.</p> <p>NDP Leaflet: 10 in favour of all LGS. 3 specifically supporting this site.</p> <p>Letter drop: 11 responses</p> <p>Reg 14 responses: 4 responses in res</p> <p>This nomination is also supported by the NDP Steering Group.</p> <p>History A long established green space, with ongoing volunteer efforts to plant and maintain the space. The space was originally part of the Rangers Estate.</p> <p>Beauty The mature trees and grassy bank make the area very attractive - in particular local people mention the lone Horse Chestnut tree, and the scented lime trees.</p> <p>Recreation This is a popular play area, and the site includes fixed play equipment as well as a more natural area. The area is used for informal games such as football and cricket, and it is also a picnic spot.</p> <p>Tranquilly The space despite being bounded by two roads remains a peaceful space. It is sufficiently set back, with a change in level which buffers it from the impact of traffic noise.</p>

	<p>Wildlife The mature trees attract birds, including owls and woodpeckers.</p>
<p>Landowner consultation</p>	<p>Stroud District Council notified by letter of intention to designate as a Local Green Space on 7 Feb 2017.</p>
<p>Landowner support / objection</p>	<p>Response received March 2018. LGSD supported on basis transferred to DTC. DTC unable to take on site but have agreed support for LGSD as part of their agreement to the Submission version of the draft plan in May 2018.</p>
<p>Recommendation</p>	<p>Despite part of the area being designated as a protected outdoor play space, the entire area is not protected.</p> <p>It is proposed that the Cambridge Avenue Green Space and Play Area is designated as a Local Green Space in the Dursley Neighbourhood Plan.</p>

Site name	Land off Acacia Drive
Site number	5 on map
Photo	
Landowner	Stroud District Council
Description of green space	<p>A small, rectangular, sloping area of mown grass with mature trees located to the south of Acacia Drive. The space has a lit footpath which runs through north to south, which connects to footpaths beyond linking to the Hospital and School. The gardens of properties in Oak Drive back onto the space.</p> <p>The green space is used as a play area and for dog walking, It is also a popular through route.</p>
Relevant Planning constraints	<p>Two specimen trees and other mature trees on site. No other planning constraints - the site is not recognised formally as a protected outdoor play space in the Stroud Local Plan.</p> <p>The site is noted as a potentially suitable development site in the Stroud SALA 2016 ref DUROO2. Prior to this is was being assessed as a potential Local Green Space by the NDP.</p>
Map	See figure 1.
In reasonably close proximity to the community it serves	Immediately to the rear of residential properties at all boundaries.
Local in character and not an extensive tract of land	Clearly bounded site, not an extensive tract of land. Only accessible via pedestrian paths.


<p>Demonstrably special to the local community and holds a particular significance, for example because of its beauty, historic significance, tranquility, recreational value (including as a playing field), or richness of wildlife</p>	<p>Consultation events:</p> <p>Dursley Town Festival 25/06/2016 – 16 (combined and specific) comments from community in respect of green spaces.</p> <p>Transition C&D Flower Show 3/9/2016 – 7 responses in support of this LGSD.</p> <p>Dursley Farmers Market 10/9/2016 – 2 comments in support of all LGSDs.</p> <p>15/7/2017 Dursley Carnival -27 responses in support of LGSD</p> <p>NDP Leaflet: 10 in favour of all LGS. Letter drop:</p> <p>Letter Drop: 1 response in support of this site</p> <p>Reg 14 responses: 4 in support of all LGSDs.</p> <p>The NDP Steering Group have visited the site and support its designations it provides a green space in an area of the town with less access to green space.</p> <p>Tranquility</p> <p><input type="checkbox"/> The space is a quiet oasis with mature trees</p> <p>Recreational value</p> <p><input type="checkbox"/> Used by young people, children and dog walkers. A popular through route.</p> <p>Richness of wildlife</p> <p><input type="checkbox"/> Fox and deer have been sighted</p>
<p>Landowner consultation</p>	<p>Stroud District Council notified by letter of intention to designate as a Local Green Space on 7th February 2017..</p>
<p>Landowner support / objection</p>	<p>Response received March 2018. SDC object to LGSD as they want to put site forward for housing development. SG have decided to retain as LGSD as per NDP SG vote in April 2018. SDC notified of SG decision April 2018. DTC have agreed this as part of their Submission version of the draft plan</p>

Recommendation	Despite the area being recognised as having development potential in Stroud’s SALA, it is felt that this space is special to the local community for its tranquility, recreation and wildlife value. It is proposed that the Land off Acacia Drive is designated as a Local Green Space in the Dursley Neighbourhood Plan.
-----------------------	--

Site name	Land off Hardings Drive
Site number	6 on map
Photo (© DDGE/BEXCOPTER)	
Landowner	Mr Clutterbuck and Ms Munyard
Description of green space	There is strong community support for this piece of privately owned land to be designated as a local green space in the NDP. An application has also been submitted for this land to be designated as a Town Green. The site lies outside the town settlement boundary and within the Cotswold Area of Outstanding Natural Beauty. This green space is highly visible from many places in the town and provides stunning views of the surrounding countryside. Lots of children and dog walkers regularly use and enjoy this space for a variety of recreational activities. Land off Hardings Drive is a tranquil and quiet space in close proximity to a well populated area of town. The land is a haven for a variety of wildlife including including badgers, foxes deer and birds
Planning constraints	The site is located wholly within the AONB, outside of the settlement boundary.


Map	See figure 1.
In reasonably close proximity to the community it serves	The land is located at the edge of the settlement
Local in character and not an extensive tract of land	It is bordered by residential development to the south and the northern side is bounded by ancient woodland.
Demonstrably special to the local community and holds a particular significance, for example because of its beauty, historic significance, tranquility, recreational value (including as a playing field), or richness of wildlife	<p>Consultation events:</p> <p>Dursley Town Festival 25/6/2016 – 16 (combined and specific) comments from community in support of green spaces.</p> <p>Transition C&D Flower Show 3/9/2016 – 9 responses in support of LGSD.</p> <p>Dursley farmers Market 10/9/2016 –2 comments in support of all LGSDs and 3 comments specifically for this site.</p> <p>Dursley Carnival 15/7/2017 – 27 responses in support of all LGSD plus 2 specifically for this site.</p> <p>NDP Leaflet Response: 10 in favour of all LGS 3 specifically for this site.</p> <p>Letter drop: 44 responses received in support from the community for this LGS.</p> <p>Reg 14 responses: 4 responses in support for all LGSDs 4 specifically for this site.</p> <p>This nomination is also supported by the NDP Steering Group who are familiar with the site. A town green application for this land is currently being pursued (reference No 51942).</p> <p>A large amount of evidence of the community value of this land has been collated as part of the town green application, this evidence supports the fact that this space is demonstrably special to the community.</p> <p>The following reasons for its significance are repeated:</p> <p>Beauty/Tranquility</p> <ul style="list-style-type: none"> • The view to this field is locally valued as it is highly visible, and it forms a prominent view of green space below the ancient woodlands.

	<ul style="list-style-type: none"> • There is a prominent view of this green space from the town centre. • The view of the green space provides beauty and tranquility for many people in the town <p>Wildlife This area has plenty of wildlife- bats, birds of prey, badgers, deer, owls etc.</p> <p>Recreation value</p> <ul style="list-style-type: none"> • Historically access was given to the field for local people although it is in private ownership. • There is a public footpath within the site which provides access.
Landowner consultation	Landowner notified of intention to designate as a Local Green Space on 30 th January 2017.
Landowner support / objection	No response received.
Recommendation	<p>Despite the area already having significant protection from development by virtue of it being outside the settlement boundary and within the Area of Outstanding Natural Beauty - signifying its national importance and landscape value. Due to the strength of public support for this proposal, and the value attributed to this space as a key green space for the town in terms of landscape character, beauty and tranquility. Additionally the wildlife and recreational value of this site are noted by a large number of local people.</p> <p>Designate Land off Hardings Drive as a Local Green Space in the Dursley Neighbourhood Plan.</p>

Site name	Long Street Town Green
Site number	7 on map
Photo	
Landowner	Stroud District Council
Description of green space	A relatively small green space at the bottom of Long Street which contains both commercial and residential properties. It provides an important entrance to the town for many walkers on the Cotswold Way. It also provides a tranquil space in a fairly densely populated area of town.
Planning constraints	This space is designated as a Town Green.
Map	See figure 1.
In reasonably close proximity to the community it serves	The site is surrounded by residential development.
Local in character and not an extensive tract of land	Site is well contained and bounded, the same boundary as the Town Green designation is proposed for consistency.


<p>Demonstrably special to the local community and holds a particular significance, for example because of its beauty, historic significance, tranquility, recreational value (including as a playing field), or richness of wildlife</p>	<p>Consultation events:</p> <p>Dursley Town Festival 25/6/2016 – 16 (combined and specific) comments from community in support of green spaces.</p> <p>Transition C&D Flower Show 3/9/2016 – 7 responses in support of this LGSD.</p> <p>Dursley Farmers Market 10/9/2016 – 2 comments in support of all LGSDs.</p> <p>15/7/2017 Dursley Carnival – 27 in support of LGSD plus 2 specifically for this site. NDP Leaflet: 10 in favour of all LGS. Letter Drop: 5 responses in support of this site. Reg 14 responses: 4 responses in support of all LGSDs.</p> <p>This nomination is supported by the NDP Steering Group who are familiar with the site.</p> <p>A significant level of local support was gathered as part of the recent successful town green application process, which also demonstrates the community value of this space.</p> <p>Beauty/Tranquility This green space within the central area of the Town makes it particularly valued. The space has attractive landscaping and tree planting.</p> <p>The area is perceived to add tranquility to an otherwise built up area.</p> <p>Recreation This is a small space enjoyed by those who use it for picnics, play, dog walking and blackberry picking.</p> <p>Wildlife A variety of wildlife can be found on site including foxes, badgers and bats.</p> <p>History This area was historically gifted as an area for the community to enjoy by Listers, it has been a green space since the 1960s.</p>
--	--

Landowner consultation	Landowner notified by letter of intention to designate as a Local Green Space on 7 Feb 2017. Response received March 2018.
Landowner support / objection	Response received March 2018. LGSD supported on basis transferred to DTC. DTC unable to take on site but have agreed support for LGSD as part of their agreement to the Submission version of the draft plan in May 2018.
Recommendation	It is proposed that Long Street Town Green is designated as a Local Green Space in the Dursley Neighbourhood Plan.

Site name	Union Street Green
Site number	8 on map
Photo	
Landowner	Stroud District Council
Description of green space	Union Street Green is on the site of the former workhouse in Dursley. It is a green space which is very close to the town centre and can be accessed by footpaths from Parsonage Street and May Lane. It provides a space for families and dog walkers to enjoy and is an important habitat for wildlife.
Planning constraints	No known planning constraints - the site is not recognised formally as a protected outdoor play space in the Stroud Local Plan.
Map	See figure 1.

<p>In reasonably close proximity to the community it serves</p>	<p>The site is surrounded by residential development.</p>
<p>Local in character and not an extensive tract of land</p>	<p>Site is well contained and bounded.</p>
<p>Demonstrably special to the local community and holds a particular significance, for example because of its beauty, historic significance, tranquility, recreational value (including as a playing field), or richness of wildlife</p>	<p>Consultation events:</p> <p>Dursley Town Festival 25/6/2016 – 16 (combined and specific) comments from community in support of green spaces.</p> <p>Transition C&D Flower Show 3/9/2016 – 7 responses in support of this LGSD.</p> <p>Dursley Farmers Market 10/9/2016 – 2 comments in support of all LGSDs.</p> <p>15/07/2017 – 27 in responses in support of all LGSD 4 specifically for this site. NDP Leaflet: 10 in favour of all LGS. Letter drop: 8 responses for this site. Reg 14 responses: 4 responses in support of all LGSDs.</p> <p>This nomination is supported by the NDP Steering Group who are all familiar with the site.</p> <p>Beauty/Tranquility This area is now a wildflower meadow, from here there are views to Cam church as well as the surrounding hills. New trees have recently been planted.</p> <p>The space is very peaceful, set away from the roads and views out of the space are impressive.</p> <p>History This site was the location of a 1800s workhouse - see historic map from 1901 where this is still shown. An Archaeological evaluation in 2007, showed evidence of below ground footings and buildings of the 1800s poor house.</p> <p>Recreation This is a popular play space, and it is also well used by dog walkers.</p> <p>It is also used as a picnic spot or a place for walks.</p>

	<p>Wildlife Wildlife such as badgers, foxes, birds and bees and butterflies are found in the space.</p>
<p>Landowner consultation</p>	<p>Landowner notified by letter of intention to designate as a Local Green Space 7th Feb 2017.</p>
<p>Landowner support / objection</p>	<p>Response received March 2018. LGSD supported on basis this is transferred to DTC. DTC unable to take on site but have agreed support for LGSD as part of their agreement to the Submission version of the draft plan in May 2018.</p>
<p>Recommendation</p>	<p>It is proposed that the Union Street Green is designated as a Local Green Space in the Dursley Neighbourhood Plan.</p>

Site name	Holywell Orchard (the part within the Dursley boundary)
Site number	9 on map
Photo	
Landowner	Stroud District Council
Description of green space	Holywell Orchard is a two acre site which is largely in Norman Hill, Cam. The majority of this site is within the Cam Parish, however, a small section falls within the Dursley Parish boundary and it is that which we are seeking as a proposed Local Green Space. This site was once a large orchard and provides a haven for wildlife. It is also used extensively by dog walkers and parents walking their children to school. Stroud Valleys Project have undertaken various landscape related projects during the last few years.
Planning constraints	No known planning constraints - the site is not recognised formally as a protected outdoor play space in the Stroud Local Plan. The site is noted as a potentially suitable development site in the Stroud SALA 2016 ref DURO21. Prior to this it was being assessed as a potential Local Green Space by the NDP.
Map	See figure 1.
In reasonably close proximity to the community it serves	The site is surrounded by residential development.
Local in character and not an extensive tract of land	The site is well bounded by footpaths and field/property boundaries and not an extensive tract of land.

<p>Demonstrably special to the local community and holds a particular significance, for example because of its beauty, historic significance, tranquility, recreational value (including as a playing field), or richness of wildlife</p>	<p>Consultation events:</p> <p>Dursley Town Festival 25/6/2016 – 16 (combined and specific) comments from community in support of green spaces.</p> <p>Transition C&D Flower Show 3/9/2016 -8 responses in support of this LGSD.</p> <p>Dursley Farmers Market 10/9/2016 –2 comments in support of all LGSDs.</p> <p>15/07/2017 – Dursley Carnival – 27 responses in support of all LGSD plus 1 specifically for Holywell Orchard. NDP Leaflet responses: 10 in favour of all LGS.</p> <p>Letter drop: 3 responses received in support from the community for this local green space nomination.</p> <p>Reg 14 responses: 4 responses in support of all LGSDs.</p> <p>This nomination is also supported by the NDP Steering Group who are all familiar with the site.</p> <p>Beauty/Tranquility Native trees and wildflowers make the green space attractive.</p> <p>The green space is seen as a calm oasis.</p> <p>History According to the plaque on site this is one of the last remaining orchards in the Cam Parish. Only a small part of this Orchard lies within the Dursley Parish.</p> <p>Recreation This is a well-used space for dog walking that is easily accessible, many other green areas in town do not allow dog access.</p>
<p>Landowner consultation</p>	<p>Stroud District Council notified by letter of intention to designate as a Local Green Space on 7th February 2017.</p>
<p>Landowner support / objection</p>	<p>Response received March 2018. LGSD supported on basis transferred to DTC. DTC unable to take on site but have agreed support for LGSD as part of their agreement to the Submission version of the draft plan in May 2018.</p>

Recommendation	<p>Despite the area being recognised as having development potential in Stroud’s latest SALA, it is felt that this space is special to the local community for its beauty, tranquility, historical, recreation and wildlife value.</p> <p>It is proposed that the Holywell Orchard is designated as a Local Green Space in the Dursley Neighbourhood Plan.</p>
-----------------------	--

Appendices

Appendix 1

The long list of potential NDP considered by the Dursley NDP Steering Group.

Green Space	Owner	GS close to community	beauty	historic significance	recreational value	tranquillity	richness of wildlife	richness of land	Prop LG Space	LP Protection	AONB	O/S boundary	Town Green	Comm Facility
Maple Close Play Area	SDC	✓	x	x	x	x	x	x	✓	x	x	x	x	x
Kingshill House Play Park	DTC	✓	x	✓	✓	✓	x	x	✓	✓	x	x	x	✓
War Memorial Recreation Ground	DTC	✓	✓	✓	✓	✓	x	x	✓	✓	x	x	x	✓
Listers Bowling Green	SDC	✓	✓	✓	✓	✓	x	✓	x	✓	x	x	x	✓
Highfields Play Park & Field	SDC	✓	✓	x	✓	✓	x	x	✓	✓	x	✓	x	✓
Cambridge Avenue Play Area	SDC	✓	x	x	✓	x	x	x	✓	✓	x	x	x	✓
Land off Acacia Drive	SDC	✓	✓	x	✓	✓	x	x	✓	x	x	x	x	x
Acacia Drive Play Park	SDC	✓	x	x	x	x	x	x	✓	x	x	x	x	✓
	Private Owners												Applied	
Land off Hardings Drive	hip	✓	✓	✓	✓	✓	✓	x	✓	✓	✓	✓		x
Long Street Town Green	SDC	✓	x	x	✓	✓	x	x	✓	✓	x	x	✓	x
The Millponds, Riversmill	Homeowners	✓	✓	✓	✓	✓	✓	x	x	✓	x	x	x	x
Union Street Green	SDC	✓	✓	x	✓	✓	✓	x	✓	✓	x	x	x	x
Allotments	DTC	✓	✓	x	✓	✓	✓	x	x	✓	x	x	x	✓
	Private Owners													
Area off Ferney Hill Footpath (Chestal Farm)	hip	✓	x	x	x	x	x	x	✓	x		✓	x	x
												Dursley/C		
Holywell Orchard	SDC	✓	✓	✓	✓	✓	✓	x	✓	✓	x	am	x	x
Dursley Sculpture & Play Trail & Twinborrow	DTC (Mgmt Company)	✓	x	x	x	x	x	x	✓	✓	✓	✓	x	x
16a (Crest Nicholson LEAP/LAP)	(Mgmt Company)	✓	x	x	x	x	x	x	✓	x	x	x	x	✓
16b (Crest Nicholson)	(Mgmt Company)	✓	x	x	x	x	x	x	✓	x	x	x	x	✓

16c (Crest Nicholson)	(Mgmt Compa ny)	√	x	x	x	x	x	x	x	x	√	x	x	x	√
-----------------------	-----------------------	---	---	---	---	---	---	---	---	---	---	---	---	---	---

Those marked red to be
Proposed LGS
Designation in NDP

List reviewed at site visit
on 10/10/2016
List reviewed at SG Mtg
on 12/10/2016
List updated 15/11 after
reply from SDC
List reviewed at SG Mtg
on 14/12/2016

Appendix 2

Letters were sent to the owners of Land off Hardings Drive – Mr C Clutterbuck and Ms J Munyard on 30th January 2017. No response received.

Letters were sent to Mr Nick Stewart and Mr Carlos Novoth on 7th February 2017 at Stroud District Council owners of:

- Highfields Play Park & Field
- Cambridge Avenue Play Area
- Land off Acacia Drive
- Long Street Town Green
- Union Street Green
- Holywell Orchard (the part within the Dursley parish Boundary)

No response was received.

Copy of the template letter sent to landowners .

9th February 2017

Mr John Kay
Town Clerk
Dursley Town Council
Castle Street
Dursley
GL11 4BS

Dear Mr Kay,

Local Green Space Nominations – Landowner Notification

I am writing to inform you that the following green spaces have been nominated as Local Green Spaces for designation within Dursley Neighbourhood Plan. Please see www.dursleytowncouncil.gov.uk/neighbourhood-plan for a copy of the draft plan.

- Kingshill House Play Park
- War Memorial Recreation Ground

Enclosed is a map for each green space (edged with a red line) that has been nominated. Although an initial assessment has been undertaken, a decision has not yet been made in relation to whether this site is a suitable candidate for Local Green Space designation.

What does Local Green Space Nomination mean?

Successful designation of the site as a Local Green Space would mean that any new development on the land would not be possible other than in 'very special circumstances'. (National Planning Policy Framework, para 76).

In line with nationally defined criteria to be suitable for designation, the local green space must be:

- In reasonably close proximity to the community it serves
- Demonstrably special to the local community and hold particular significance, for example, because of its beauty, historic significance, recreational value (including playing fields), tranquility or richness of wildlife.
- Local in character and not an extensive tract of land

In addition, land which is subject to existing national planning designation will need a very good justification for additional designation, in line with national guidance, for example land within the Area of Outstanding Natural Beauty.

If you would like to discuss the content of this letter or would like further information about Future Dursley then please contact Anita Gambie, Project Officer at Dursley Town Council before **Thursday 16th March 2017**.

A formal consultation on the draft Neighbourhood Development Plan will follow in April/May 2017. As part of this process you will be able to comment again on the recommended inclusion or exclusion of your site as a Local Green Space in the draft plan. We will write to you again at this stage to notify you in relation to the latest position in relation to these green spaces.

Yours sincerely

Anita Gambie
On behalf of Future Dursley NDP Steering Group

Other landowners notified of proposed Local Green Space Designations

Letters were sent to the owners of Land off Hardings Drive – Mr C Clutterbuck and Ms J Munyard on 30th January 2017. No response received.

Letters were sent to Mr Nick Stewart and Mr Carlos Novoth on 7th February 2017 at Stroud District Council owners of:

- Highfields Play Park & Field
- Cambridge Avenue Play Area
- Land off Acacia Drive
- Long Street Town Green
- Union Street Green
- Holywell Orchard (the part within the Dursley parish Boundary)

Response received in March 2018.

See separate PDF file on NDP pages of Dursley Town Council website for correspondence between Steering Group and Stroud District Council.

Appendix 3

Consultation evidence including:

- (i) Copy of letter/map/and pro forma sent to those living in the vicinity of the LGS proposed designations



3rd May 2017

Dear Dursley Resident,

PROPOSED LOCAL GREEN SPACE DESIGNATION: CAMBRIDGE AVENUE PLAY AREA

I am writing as a Project Officer, employed by Dursley Town Council, to support the Future Dursley Neighbourhood Development Plan. As part of our work in developing the Plan, local people have suggested to us some small areas of land that they think could benefit from being formally designated in the Plan as what are termed 'Local Green Spaces'. Getting such spaces designated in the plan protects them from any development in the future.

We are contacting you because you live near to one of the suggested Local Green Spaces (LGS), as outlined in red on the enclosed map. In order to satisfy the rigorous legal process to designate a LGS, we first of all need to know the views of those like you who live near to the site because community support is essential. According to the law, sites must be '*demonstrably special to a local community and hold a particular local significance*'. That significance is about whether a site is:

- Beautiful (as local people see that).
- Historically significant (which can be in terms of very local history).
- Valuable for recreation (anything from formal or informal play to dog walking).
- Tranquil (mostly quiet)
- Rich in or important for wildlife (not necessarily on the site but using it, e.g. bats)

There may be no current intention to develop the site on the map but please let us know by filling in the form attached, if it meets – for you-any of the five criteria. As part of this process we have to contact the landowner, who has the right to object to the designation. This then all gets resolved by the independent Examiner who will eventually get to report on the Neighbourhood Plan, so the strength of our i.e. your evidence is crucial.

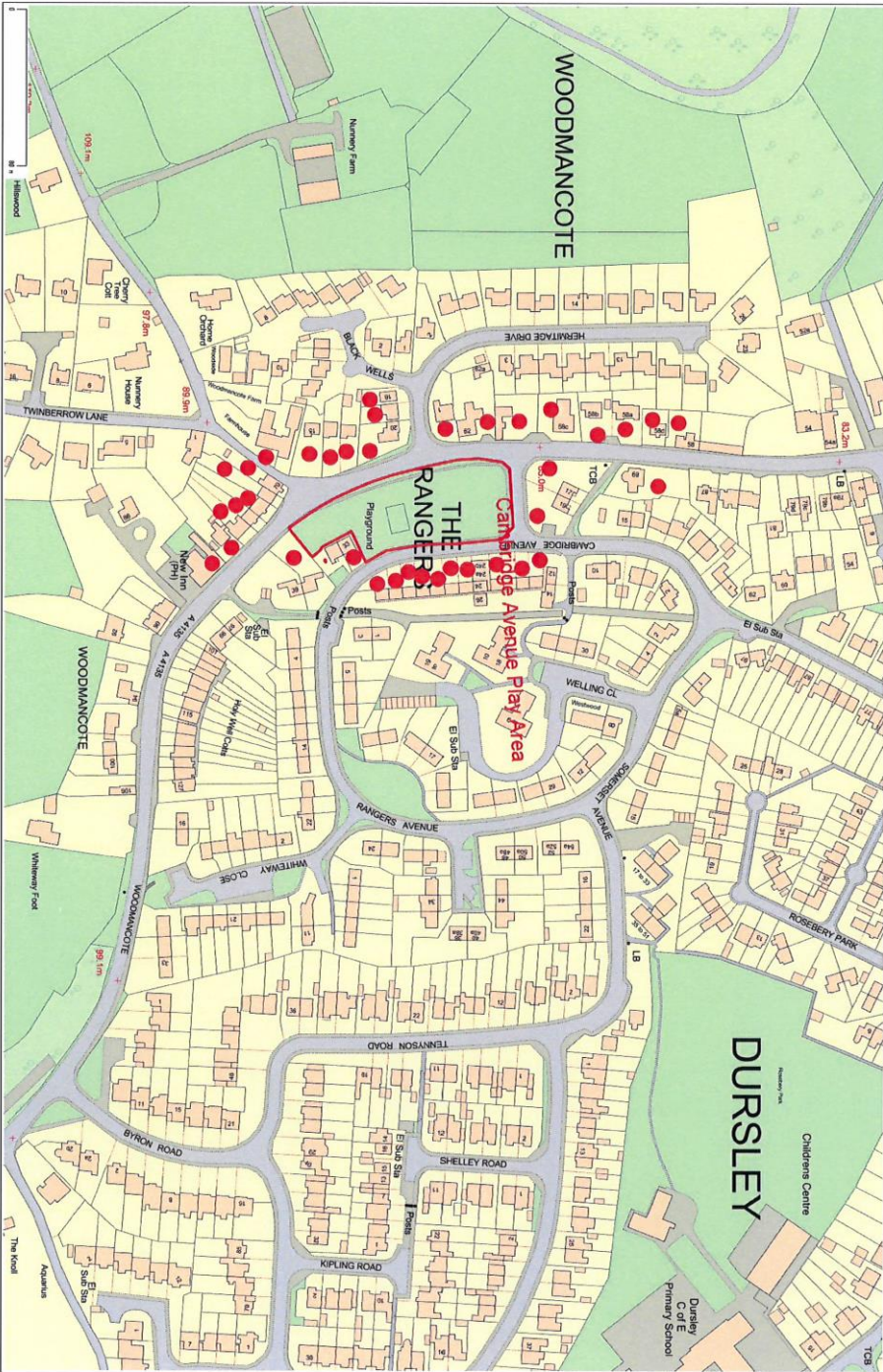
It is always difficult to know how many people to invite to comment on issues such as this so we have marked with a dot all the households we have sent this letter to. If other people nearby that you know also wish to comment, they can contact me for an additional form.

Contact: Future Dursley, Neighbourhood Development Plan, c/o Dursley Town Council,
Castle Street, Dursley, Gloucestershire, GL11 4BS.

Telephone: 01453 547758

Email: ndp@dursleytowncouncil.gov.uk

Website: www.dursleytowncouncil.gov.uk



Date Created: 18-5-2017 | Map Centre (Eastings/Northings): 376222 / 197388 | Scale: 1:2539 | © Crown copyright and database right. All rights reserved (100050612) 2017



FUTURE DURSLEY

Our Neighbourhood Plan

FUTURE DURSLEY NEIGHBOURHOOD PLAN POSSIBLE LOCAL GREEN SPACES

Name of possible Local Green Space: **CAMBRIDGE AVENUE PLAY AREA**

Please note in the boxes below, as briefly as possible, how you think this site might meet the various criteria (or not, if that is your view). Only fill in the boxes you consider relevant.

BEAUTY

HISTORICAL SIGNIFICANCE

RECREATIONAL USE

TRANQUILLITY

WILDLIFE

(ii) Copy of the Local Green Spaces part of the consultation questionnaire/leaflet sent to all Dursley residents

Map showing the 4 Brownfield Sites & Proposed Local Green Space Designations

Proposed Local Green Space Designations

- 1 Kingshill House Play Park
- 2 War Memorial Recreation Ground
- 3 Highfields Play Park and Field
- 4 Cambridge Avenue Play Area
- 5 Land off Acacia Drive
- 6 Land off Hardings Drive
- 7 Long Street Town Green
- 8 Union Street Green
- 9 Holywell Orchard

Key brownfield locations

- 1 Old Dairy/Prospect Place/11 May Lane
- 2 Bus Station
- 3 Reliance House
- 4 Cambridge House

Local Green Spaces

An NDP can allow us to have special protection for green spaces that are important in Dursley. The following green spaces have been compiled based on the evidence and local feedback so far. If successfully designated, these spaces would be protected from future development.

Please use the comments slip to tell us why these green spaces are important to you & how you use them

Proposed Local Green Space Designations

1. Kingshill House Play Park

©DDGE/BEXCOPTER
6. Land off Hardings Drive

2. War Memorial Recreation Ground

3. Highfields Play Park and Field

4. Cambridge Avenue Play Area

5. Land off Acacia Drive



7. Long Street Green



8. Union Street Green



9. Holywell Orchard

How is the Future Dursley NDP funded?

Future Dursley and the process to develop the NDP is supported and funded with assistance from the Community Development Foundation, Locality and Dursley Town Council.

Please complete the Comments Slip

We would like your general comments on the draft plan and your views on the proposed local green space designations.

Please return the slip by **Friday 15th September 2017** to: Future Dursley NDP, c/o Dursley Town Council, Jacob's House, Castle Street, Dursley, Glos. GL11 4BS
Tel: 01453 547758

or send comments via
Email: ndp@dursleytowncouncil.gov.uk
Website: www.dursleytowncouncil.gov.uk



Comments Slip

Name:

Your Contact Details:

V2

(iii) Photo of Display Boards relating to Local Green Space used at consultation events.



Appendix 4

Copy of all landowner responses received



Dursley Town Council

Town Clerk: Mr John Kay
Jacob's House, Castle Street,
Dursley, Gloucestershire, GL11 4BS
Telephone: 01453 547758
Email: clerk@dursleytowncouncil.gov.uk
www.dursleytowncouncil.gov.uk



17th March 2017

Mrs Anita Gambie
Future Dursley Steering Group
c/o Dursley Town Council
Castle Street
Dursley
GL11 4BS

Dear Anita,

Local Green Space Nominations – Landowner Notification.

Dursley Town Council's Green Spaces Committee have considered the content of your letter dated 9th February 2017 and have resolved to support the Kingshill Play Area as Local Green Spaces.

The Committee agreed that both locations were:

- In close proximity to the community it serves.
- Demonstrably special to the local community and holds particular significance because of its recreational value (including playing fields at WMRG).
- Local in character and not an extensive tract of land.

It was agreed that the War Memorial Recreation Ground could benefit from improvements to recreational and community facilities in the future and the Committee do not want to restrict the potential of the Recreation Ground by designating it as a Local Green Space at this time.

Yours sincerely

A handwritten signature in black ink, appearing to read 'John Kay', with a long horizontal flourish extending to the right.

John Kay
Town Clerk
Dursley Town Council

Cc Chair of Green Spaces, Cllr Alex Stennett

APPENDIX 5: SUMMARY OF RESPONSES TO PROPOSED LOCAL GREEN SPACE FORMS

Green Space	Date Rec'd	Name	Support for Designation	Near Comm	Extensive Area	Beauty	Hist Signif	Rec use	Tranquil	Wildlife
Kingshill House Play Park	01/05/2017	P&M Harper	y	y	n	n/c	y	y	y	y
Kingshill House Play Park	03/05/2017	Mr A Hara	y	y	n	y	y	y	y	y
Kingshill House Play Park	11/05/2017	Patricia Greenway	y	y	n	y	y	y	y	y
Kingshill House Play Park	23/05/2017	Julie Feltham & Fran Walton	y	y	n	y	y	y	y	n/c
Kingshill House Play Park	25/05/2017	Mr & Mrs Lai + family	y	y	n	y	y	y	y	y
Kingshill House Play Park	26/05/2017	MR & Mrs Watts	y	y	n	y	y	y	y	y

Summary: This park has tall trees and good views towards Cam Peak and the Littlecombe housing estate. The play equipment and large grassed area are widely used by local children. This green space is away from busy roads, surrounded by housing and is a quiet and peaceful place. A great variety of birds have been spotted in the trees in Kingshill House Play Park.

WMRG	27/04/2017	Mr DJ Browning	y	y	n	y	y	y	n/c	y
WMRG	28/04/2017	Chloe Hall	y	y	n	y	n	y	y	y
WMRG	28/04/2017	Mr P.J.Durcan	y	y	n	y	y	y	y	y
WMRG	02/05/2017	Emily Wardle	y	y	n	y	y	y	y	y
WMRG	02/05/2017	Sue Bostock	unsure	y	n	y	y	y	y	y
WMRG	03/05/2017	M. Moreton	y	n	y	y	y	y	y	n/c
WMRG	09/05/2017	S. Nelmes	y	y	n	n	n	y	n/c	n/c
WMRG	16/05/2017	Mr & Mrs Parker	y	y	n	y	y	y	y	n/c
WMRG	16/01/1900	Julie Plumley	y	y	n	y	y	y	y	n/c
WMRG	22/05/2017	Terry & Sally Larkham	y	y	n	y	y	y	n/c	y
WMRG	24/05/2017	Sally C Pinch	y	y	n	y	y	y	y	y
WMRG	25/05/2017	Mr RP Baldwin	y	y	n	y	y	y	y	n/c
WMRG	26/05/2017	Mrs T Teagle-Brown	y	y	n	y	y	y	y	y
WMRG	05/06/2017	MJ Wilcox	y	y	n	y	y	y	n/c	n/c

Summary: A well maintained, attractive area in the centre of town, surrounded by trees and offering amazing views of the wooded slopes of the Cotswold. Views towards Cam Peak, Cam Long Down, Downham Hill and Uley Bury. This recreation ground was given to the town to commemorate those who died in World War II. A great space for sports (used by lots of local football teams), fitness (excellent park facilities and fitness equipment), leisure (used as a meeting space, people have picnics and great children's play areas, tennis available for all. It is used by the community e.g local scouts and cubs and

Highfields Play Park & Fiel	03/05/2017	Carole Robson	y	y	n	n/c	n/c	y	n/c	n/c
Highfields Play Park & Fiel	25/05/2017	Rachel Wagstaff	y	y	n	y	n/c	y	y	y

Summary: Well used recreational space by children and families. Site contains a recently refurbished BMX track, play equipment, football goal posts and a youth shelter. It is a tranquil space with stunning views of the Cotswold escarpment. Some of the wildlife seen using this space includes foxes, owls, hedgehogs and a large variety of birds.

Cambridge Avenue Play Ar	01/05/2017	Ms J Trevelyan & Mr C Timon	y	y	n	y	y	y	y	y
Cambridge Avenue Play Ar	03/05/2017	Mrs Powell	y	y	n	y	y	y	y	y
Cambridge Avenue Play Ar	04/05/2017	Ruth Narramore	y	y	n	y	n/c	y	y	y
Cambridge Avenue Play Ar	22/05/2017	Linda Lewis	y	y	n	y	n/c	y	y	n/c
Cambridge Avenue Play Ar	23/05/2017	Sue Watkins	y	y	n	y	y	y	y	y
Cambridge Avenue Play Ar	24/05/2017	Jean Lee	y	y	n	y	n/c	y	y	n/c
Cambridge Avenue Play Ar	24/05/2017	V Blitz	y	y	n	y	y	y	y	y
Cambridge Avenue Play Ar	24/05/2017	Miss C McLean-Manning	y	y	n	y	y	y	y	y
Cambridge Avenue Play Ar	25/05/2017	K Hinder	y	y	n	y	y	y	y	y
Cambridge Avenue Play Ar	12/06/2017	Naomi Wilcox	y	y	n	y	y	y	y	y
Cambridge Avenue Play Ar	28/07/2017	Mr & Mrs R Sharp	y	y	n	n/c	n/c	y	n/c	n/c

Land off Acacia Drive
 Land off Acacia Drive 24/4/2017 No contact details
 Summary: Children play in this space which is also used by dog walkers. Foxes and deer have been seen in this space.

Land off Hardings Drive	05/11/2017	Phillip Maynard	y	y	n	y	y	y	y	y
Land off Hardings Drive	15/5/2017	C.J. Dury	y	y	n	y	n/c	y	y	y
Land off Hardings Drive	17/5/2017	Martyn Harris	y	y	n	y	n/c	y	y	y
Land off Hardings Drive	17/5/2017	John & Stacey Pritchard	y	y	n	y	n/c	n/c	n/c	y
Land off Hardings Drive	17/5/2017	Amanda Symons	y	y	n	y	y	y	y	y
Land off Hardings Drive	17/5/2017	Mr & Mrs Evans	y	y	n	y	y	y	y	y
Land off Hardings Drive	22/5/2017	Russell Cooper	y	y	n	y	n/c	n/c	y	n/c
Land off Hardings Drive	22/5/2017	Mrs Y Willaims	y	y	n	y	y	y	y	y
Land off Hardings Drive	22/5/2017	Michael Bowkett	y	y	n	y	n/c	y	y	y
Land off Hardings Drive	23/5/2017	Sylvie Robbins	y	y	n	y	n/c	y	y	y
Land off Hardings Drive	23/5/2017	Steve Knowlson	y	y	n	y	y	y	y	y
Land off Hardings Drive	23/5/2017	Karen Forster	y	y	n	y	y	y	y	y
Land off Hardings Drive	25/5/2017	Catherine Gruber	y	y	n	y	n/c	y	y	y
Land off Hardings Drive	31/5/2017	R Bloodworth	y	y	n	y	y	y	y	y
Land off Hardings Drive	30/5/2017	Paul Foy	y	y	n	y	n/c	n/c	y	y
Land off Hardings Drive	26/05/2017	Mr & Mrs Powell	y	y	n	y	n/c	y	y	y
Land off Hardings Drive	31/05/2017	Lynne Peer	y	y	n	y	n/c	y	y	y
Land off Hardings Drive	01/06/2017	Mrs J Beebee	y	y	n	y	y	y	y	y
Land off Hardings Drive	02/06/2017	Colin and Elizabeth Archer	y	y	n	n/c	y	y	y	y
Land off Hardings Drive	05/06/2017	Graham and Jayashri Morgan	y	y	n	y	y	y	y	y
Land off Hardings Drive	05/06/2017	Mathew Wood	y	y	n	y	y	y	y	y
Land off Hardings Drive	05/06/2017	John Andrews	y	y	n	y	y	y	y	y
Land off Hardings Drive	05/06/2017	Patricia Andrews	y	y	n	y	y	y	y	y
Land off Hardings Drive	05/06/2017	Alan Mabey	y	y	n	y	n/c	y	n/c	y
Land off Hardings Drive	06/06/2017	S Portlock	y	y	n	y	n/c	n/c	n/c	n/c
Land off Hardings Drive	05/06/2017	Mr Coates	y	y	n	y	y	y	y	y
Land off Hardings Drive	06/06/2017	Steve Downton	y	y	n	y	n/c	n/c	y	y
Land off Hardings Drive	07/06/2017	Dennis Hill	y	y	n	y	n/c	y	y	y
Land off Hardings Drive	07/06/2017	Ken Hembury	y	y	n	y	n/c	y	y	y
Land off Hardings Drive	09/06/2017	Karen & Tony D'Amico	y	y	n	y	n/c	n/c	y	y
Land off Hardings Drive	09/06/2017	Dr I Whittle	y	y	n	y	y	y	y	y
Land off Hardings Drive	06/06/2017	Mr I Pimlott	y	y	n	y	n/c	y	n/c	y
Land off Hardings Drive	08/06/2017	John & Pam Crellin	y	y	n	y	n/c	y	y	y
Land off Hardings Drive	08/06/2017	Andrew Morris	y	y	n	y	n/c	y	n/c	n/c
Land off Hardings Drive	09/06/2017	Paula Walton	y	y	n	y	y	y	y	y
Land off Hardings Drive	12/06/2017	Mathew Gowling	y	y	n	y	y	y	y	y
Land off Hardings Drive	12/06/2017	Laura Cooper	y	y	n	y	y	y	y	y

Summary: There is strong community support for this piece of privately owned land to be designated as a local green space in the neighbourhood development plan. An application has also been submitted for this land to be designated as a Town Green. The site lies outside the town settlement boundary and within the Cotswold Area of Outstanding Natural Beauty. This green space is highly visible from many places in the town and provides stunning views of the surrounding countryside. Lots of children and dog-walkers regularly use and enjoy this space for a variety of recreational activities. Land off Hardings Drive is a tranquil and quiet space in close proximity to well populated residential areas of the town. The land is a haven for a variety of wildlife including badgers, foxes, deer and birds.

Long Street Town Green	27/04/2017	Jonathan Bird	y	y	n	y	y	y	y	y
Long Street Town Green	27/04/2017	Roy Jones	y	y	n	y	y	y	n/c	y
Long Street Town Green	03/05/2017	Vicky Mathews	y	y	n	y	n/c	y	y	y
Long Street Town Green	16/05/2017	Krystyna Dembny	y	y	n	y	y	y	y	y
Long Street Town Green	24/05/2017	Helen Patrick	y	y	n	y	y	y	y	y

Summary: Long Street Town Green provides an important green space for residents of Long Street and those living in the relatively new housing estate on the former Byrnocks factory site. Local people have spotted various wildlife species using the green. It also forms part of a key gateway for walkers entering the town from the Cotswold Way.

Union Street Green	01/05/2017	Mrs Heidi Brooks	y	y	n	y	n/c	y	y	y
Union Street Green	12/05/2017	Stephen Featty	y	y	n	n/c	n/c	y	y	n/c
Union Street Green	15/05/2017	Mr & Mrs Alexander	y	y	n	y	n/c	y	y	y
Union Street Green	19/05/2017	Mr & Mrs Waitland	y	y	n	y	y	y	y	y
Union Street Green	25/05/2017	Joanne Grocock & Stephen Tell	y	y	n	y	y	y	y	y

Summary: Union Street Green is on the site of the former workhouse in Dursley. It is a green space which is very close to the town centre and can be accessed by footpaths from Parsonage Street and May Lane. It provides a space for families and dog walkers to enjoy and is an important habitat for wildlife.

Holywell Orchard	23/05/2017	Mr C Hilldrup	y	y	n	y	n/c	y	y	y
Holywell Orchard	23/05/2017	Shirley Boulton	y	y	n	y	n/c	y	y	y
Holywell Orchard	09/06/2017	Not Legible	y	y	n	y	y	y	y	y

Summary: Holywell Orchard is a two acre site in Norman Hill in Cam. The majority of this site falls within the Cam Parish, however, a small section falls within the Dursley Parish boundary and it is that which we are seeking as a proposed local green space. This site was once a large orchard and provides a haven for local wildlife. It is also used extensively by dog walkers and parents walking their children to school. Stroud Valley Project have undertaken various landscape related projects during the last few years.

